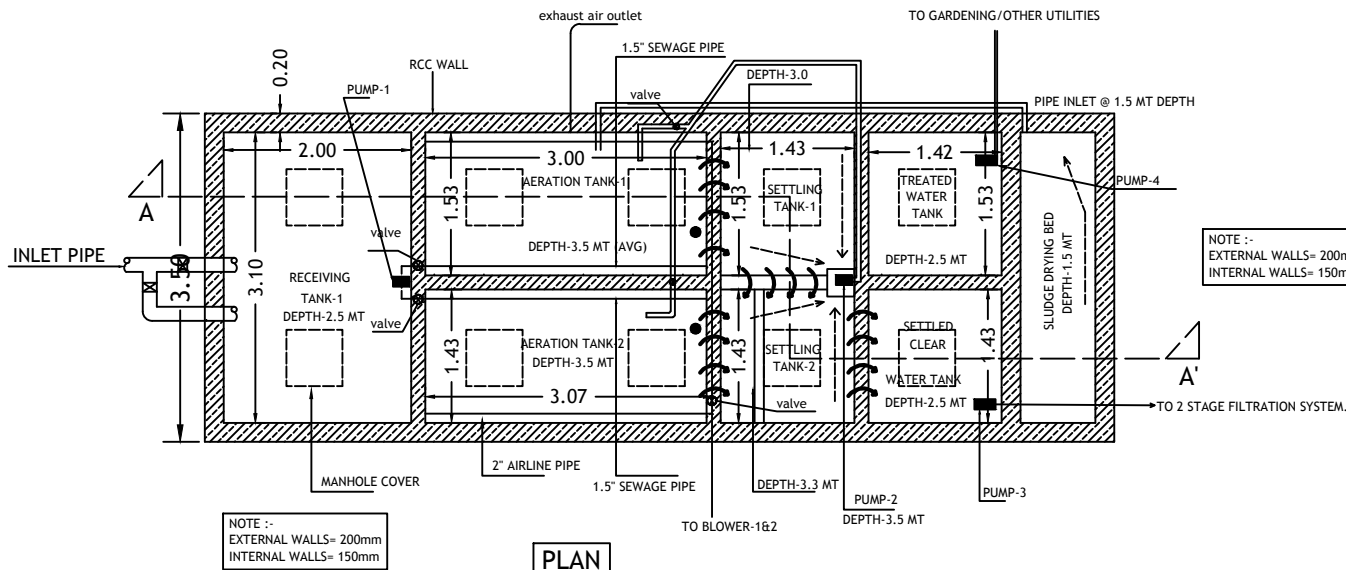


SECTION A-A'



NOTE :-  
EXTERNAL WALLS= 200mm  
INTERNAL WALLS= 150mm

NOTE :-  
EXTERNAL WALLS= 200mm  
INTERNAL WALLS= 150mm

PLAN

REFERENCE SKETCH

M25 grade of Concrete

CIVIL WORKS FOR STP FOR CRUISE TERMINAL BLDG.  
AT HARBOUR